

Service Data

Vickers®

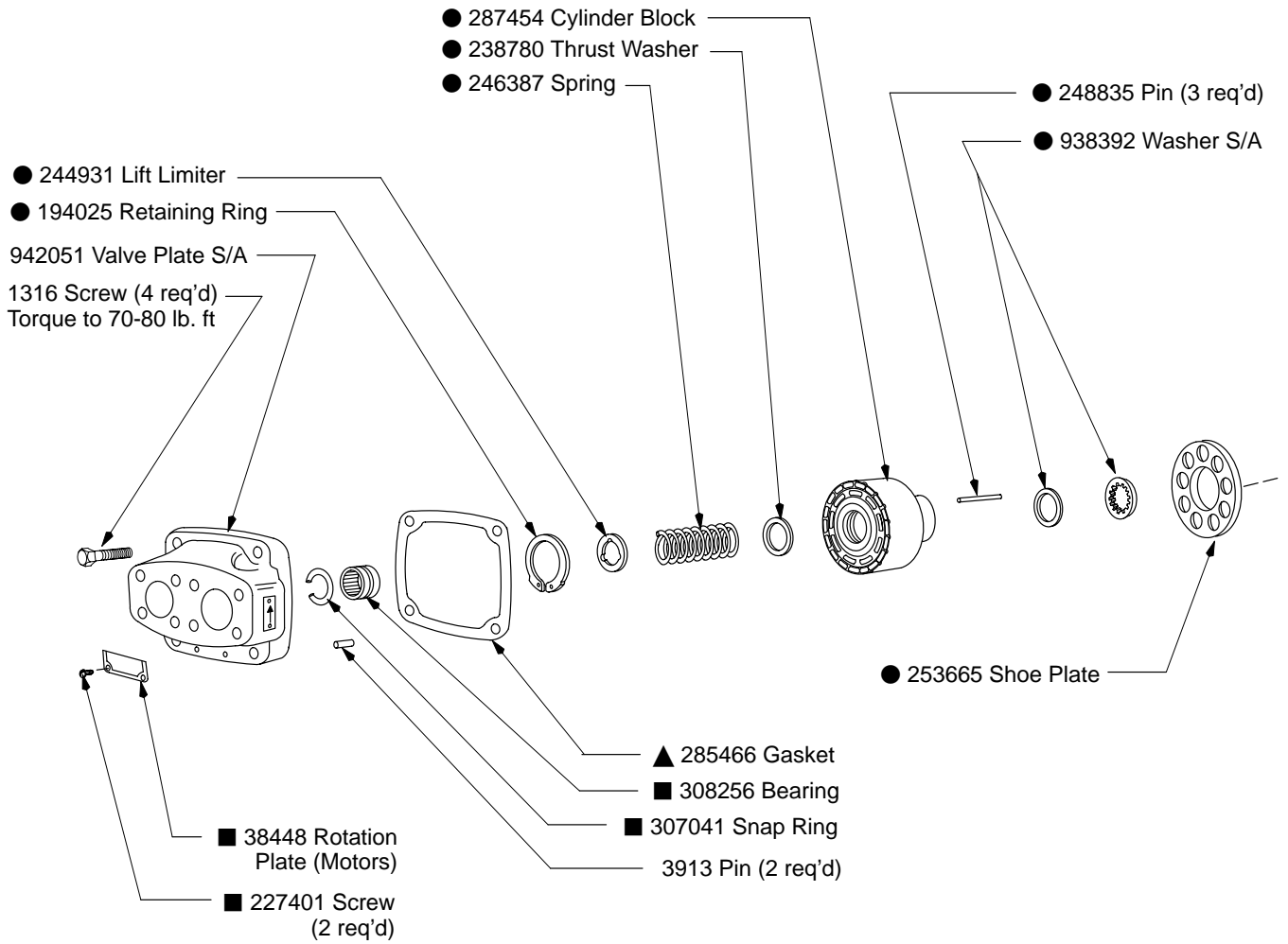
# Piston Motors

---



## 29 USgpm Fixed Displacement Inline Piston Motor

MFB29-(F)UF- 20

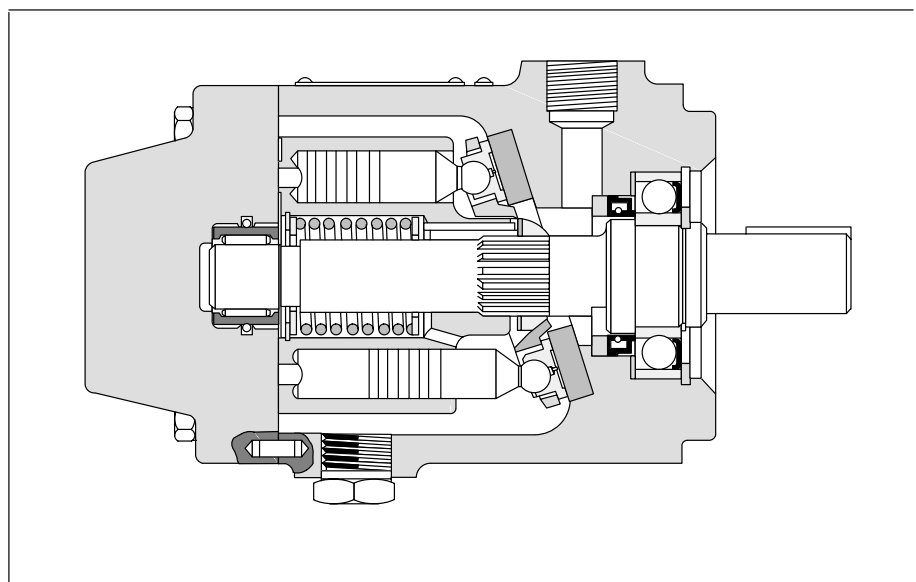
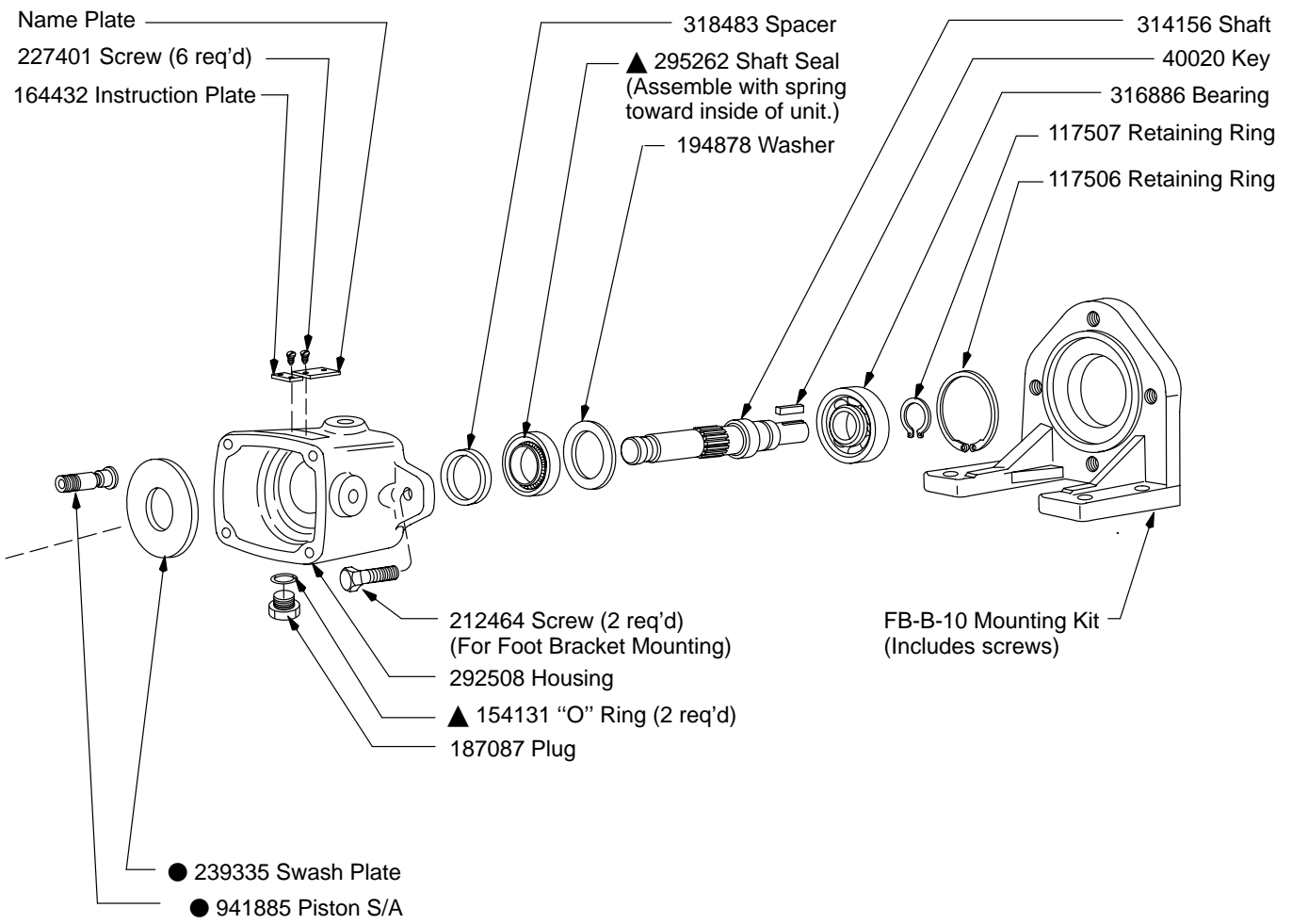


■ Included in  
 Valve Plate S/A

▲ Included in  
 919242 Seal Kit

● Included in 923001  
 Rotating Group Kit

F3 Equivalent  
 919313 Seal Kit

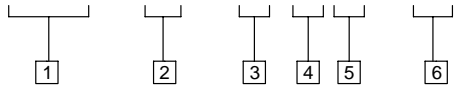


# Model Code

---

## Model Code

**MFB - 29 - (F) \* F - 20**



---

**1 Model Series**  
Fixed displacement piston motor, in-line design

---

**3 Mounting**  
**F** - Foot bracket  
(Omit when not included.)

---

**5 Flange Connection**  
**6 Design**

---

**2 Rated Displacement @ 1800 RPM**  
**29** - 29 USgpm

---

**4 Shaft Rotation**  
(Viewed from shaft end)  
**U** - Either direction (motors)

For satisfactory service life of these components, use full flow filtration to provide fluid which meets ISO cleanliness code 16/13 or cleaner. Selections from pressure, return, and in-line filter series are recommended.