

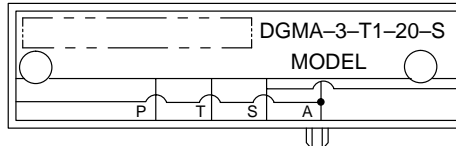
Directional Valves



Tapping, Crossover & Blanking Plates

DG4V-3 Series

**Tapping Plates
DG4V-3 Series**

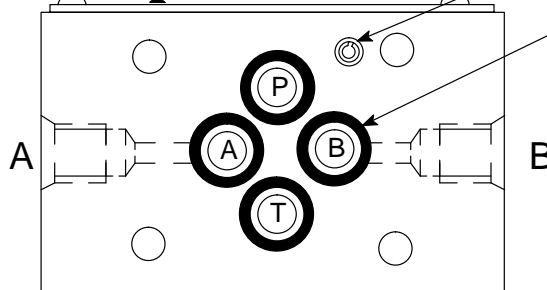


□ Nameplate

18139 Drive Screw
(2 req'd)

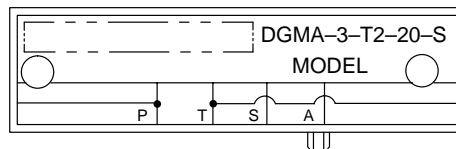
472553 Roll Pin

262332 "O" Ring
(4 req'd)



□ Name Plate read from 'P' port side
with "O" ring grooves downward.

**Tapping Plate, A & B Ports
with SAE Connections**

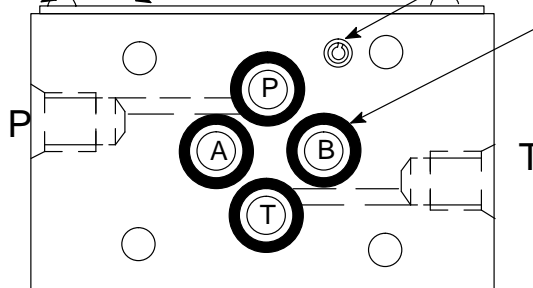


□ Nameplate

18139 Drive Screw
(2 req'd)

472553 Roll Pin

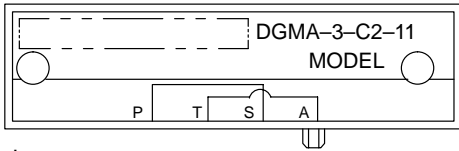
262332 "O" Ring
(4 req'd)



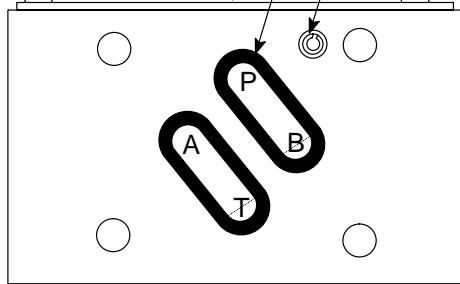
□ Name Plate read from 'P' port side
with "O" ring grooves downward.

**Tapping Plate, P & T Ports
with SAE Connections**

**Crossover Plate
DG4V-3 Series**

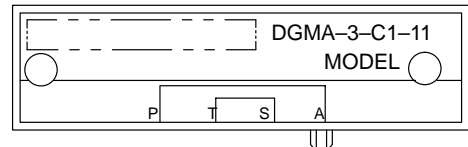


- Nameplate
- 18139 Drive Screw (2 req'd)
- 262335 "O" Ring (2 req'd)
- 472553 Roll Pin

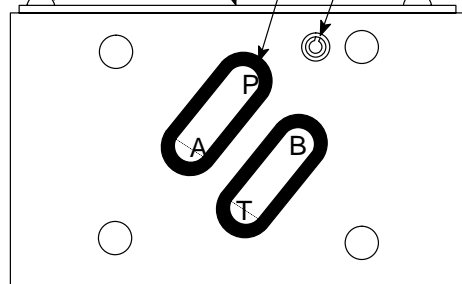


**Crossover Plate
A to T & B to P**

- Name Plate read from 'P' port side with "O" ring grooves downward.



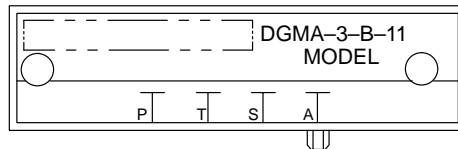
- Nameplate
- 18139 Drive Screw (2 req'd)
- 262335 "O" Ring (2 req'd)
- 472553 Roll Pin



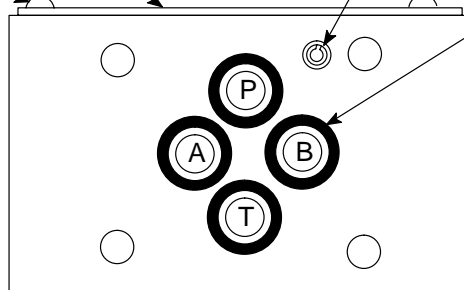
**Crossover Plate
A to P & B to T**

- Name Plate read from 'P' port side with "O" ring grooves downward.

**Blanking Plate
DG4V-3 Series**



- Nameplate
- 18139 Drive Screw (2 req'd)
- 472553 Roll Pin
- 262332 "O" Ring (4 req'd)



Blanking Plate

- Name Plate read from 'P' port side with "O" ring grooves downward.